

V-Ray 1.5 for 3ds Max Installation Guide

V-Ray and the V-Ray logo are registered trademarks of Chaos Software Ltd. in Bulgaria and other countries.

Autodesk, 3D Studio, 3D Studio MAX, 3D Studio VIZ, 3ds Max and Discreet are either registered trademarks or trademarks of Autodesk, Inc./Autodesk Canada Inc. in the USA and/or other countries.

Microsoft, Windows, Windows XP and Windows NT are either registered trademarks or trademarks of Microsoft Corporation in the United States and/or other countries.

Table of Contents

Preparing the installation.....	1
System requirements.....	1
Obtaining an installer for the new version.....	2
Obtaining a hardware lock (dongle) for the new version.....	2
Upgrade from an existing V-Ray installation.....	2
Upgrading from version 1.5 RCx to a newer version.....	3
Upgrading from version 1.47.03 and earlier.....	3
Clean installation of V-Ray 1.5.....	3
Installing version 1.5 with hardware lock (dongle).....	3
Workstation installation of V-Ray 1.5 with hardware lock (dongle).....	4
Render slave installation of V-Ray 1.5.....	12
Uninstalling V-Ray 1.5.....	15
Appendices.....	16
Reprogramming a V-Ray dongle for a different number of licenses.....	16
Creating a dongle remote programming context file (.wbc).....	17
Updating the contents of the dongle with a remote programming file (.rtu).....	17
Checking if the dongle has been reprogrammed correctly.....	18
Troubleshooting.....	19
V-Ray renderer user interface is missing in 3ds Max.....	19
The license service does not start because no dongle is found.....	22
After working properly for a while, the dongle is no longer detected.....	23
The license service is running properly, but there is no icon in the TaskBar.....	24

Preparing the installation

Before you install a new version of V-Ray for 3ds Max, please make sure you have followed these steps.

System requirements

Please make sure that your system fulfills these requirements before installing V-Ray.

Requirement	Minimum value/Other notes	Recommended value
Processor	Pentium IV or equivalent with SSE2 support.	An Intel or AMD processor with 64-bit support.
RAM	1 GB	4GB or as much as possible
Operating system	Windows NT with service pack 4; or Windows 2000; or Windows XP Professional (32- or 64-bit); or Windows Vista (32- or 64-bit); (<i>Note: we do not recommend running any V-Ray components on Windows 2003 Server Edition</i>)	Windows XP Professional 64-bit; or Windows Vista 64-bit
3ds Max	version 6.0	version 9.0 64-bit or later
USB port	Required for hardware lock	Required for hardware lock
TCP/IP	Only IPv4 is supported	Required for licensing V-Ray

Please note that IPv6 is currently not supported. You must have IPv4 set up properly in order to use V-Ray.

Obtaining an installer for the new version

You can obtain the latest official version of V-Ray from the Chaos Group website:

<http://www.chaosgroup.com/support/>

Please use the login name and password supplied to you by Chaos Group when you purchased V-Ray.

Obtaining a hardware lock (dongle) for the new version

Newer versions of V-Ray require a hardware lock (dongle) in order to operate, rather than software license key. Normally you should receive the dongle(s) from the re-seller(s) from whom you purchased V-Ray itself.

Note: once you receive your dongle, you no longer need to obtain a software license key – the dongle itself acts like a license key.

The V-Ray installation includes the required dongle drivers; you can also download and install these separately from the WIBU-KEY website at http://wibu.com/download_user.php

Upgrade from an existing V-Ray installation

This section describes how to upgrade an existing installation of V-Ray. Depending on your current version, you may need to first manually uninstall the current one.

Upgrading from version 1.5 RCx to a newer version

In order to upgrade an existing installation of V-Ray 1.5 RCx simply run the installer program for the new version and follow the on-screen instructions. There is no need to explicitly uninstall the previous V-Ray version – this will be done automatically by the installer for the new version. For more information, see the Clean installation section.

Upgrading from version 1.47.03 and earlier

Before you can upgrade V-Ray from version 1.47.03, you need to uninstall your current version. Since the original 1.47.03 version does not include an uninstaller, you must do this manually. After you remove V-Ray 1.47.03, proceed with the installation of the new version as described in the Clean installation section.

To uninstall V-Ray 1.47.03 manually, you need to delete the following files (you can run the 1.47.03 installer if you want to restore your installation later on). Note that files may be named slightly differently depending on your 3ds Max version (e.g. cgauth60.dll for 3ds Max R6 versus cgauth50.dll for 3ds Max R5):

Location	Action to perform
[maxroot]	Delete the following files: vrayxx.dll cgauthxx.dll vrlserver.exe vrayspawnerxx.exe vraydummyxx.max vraydummyxx.xml
[maxroot]\plugins	Delete the following files: vrenderxx.dlr vrayrawxx.bmi
[maxroot]\vrayplugins	Delete all files in this folder, including the vrayplugins folder itself

Clean installation of V-Ray 1.5

Installing V-Ray requires that you have administrative privileges on your system. If you are running Windows Vista, right-click on the installer and select the *Run as Administrator* option. For all other versions of Windows make sure that you are logged in with administrative privileges and double-click the installer to run it. Follow the on-screen instructions.

Installing version 1.5 with hardware lock (dongle)

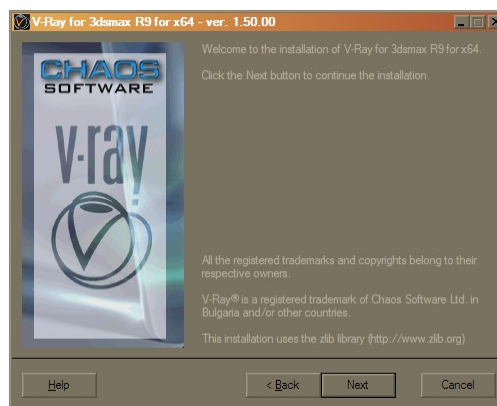
V-Ray 1.5 requires a hardware lock (dongle) in order to run. This is convenient if you want to move your V-Ray license around (e.g. work both at home and at the office) or in case you need to replace your workstation.

Using the hardware lock requires that you have the correct drivers to work with the device. These drivers are included with the installation of V-Ray for Windows XP and Vista 32- and 64-bit. You can also manually download the newest drivers from the WIBU-KEY website: http://wibu.com/download_user.php

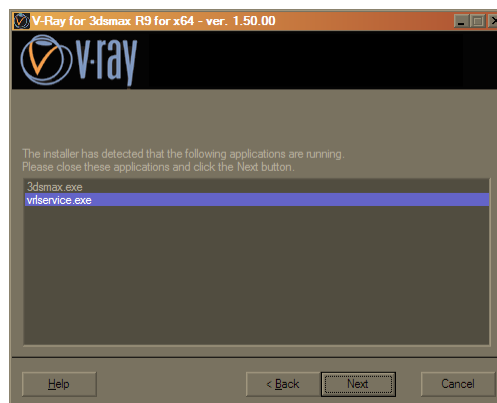
Workstation installation of V-Ray 1.5 with hardware lock (dongle)

To install V-Ray and the dongle drivers on your machine, please follow these steps:

1. Make sure that you have your dongle ready at hand. Do not plug it into your machine yet. If you plug the dongle before the correct drivers are installed, Windows will not recognize it. Also make sure that you have administrative privileges to run the installer.
2. Start the V-Ray 1.5 installer (Windows Vista users, see note above). You should get the welcome screen of the installer; click the Next button to proceed.



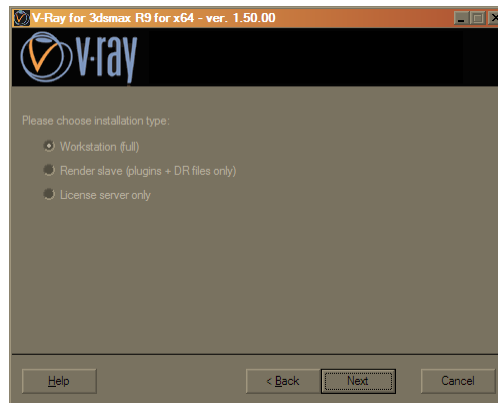
3. If the installer detects that there are applications running, which would prevent some of the files to be copied properly, it will list those applications in the next screen; close these applications and click the Next button.



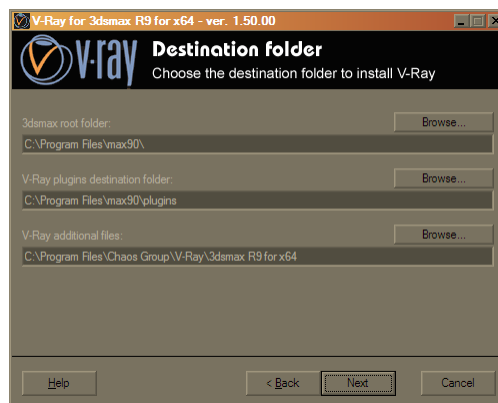
4. The next screen will present you with the V-Ray licensing agreement. Please take a moment to review this agreement. If you disagree with any of the terms, click the "I disagree" button to cancel the installation. Otherwise, click the "I agree" button to proceed:



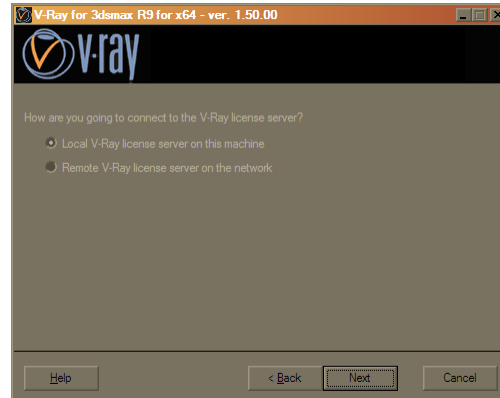
5. The next screen allows you to choose the installation type. You can choose between a full (workstation) installation, a render slave installation (which includes only files related to rendering, without documentation nor the V-Ray SDK), and a license server only installation (which includes only files related to the V-Ray license server). Since we are interested in a workstation installation, choose the Workstation (full) option:



6. The next screen requires to enter the folders into which the various V-Ray components will be copied. The installer will fill in the fields with default suitable values, if possible. You can change any of these paths as you wish, although the defaults should work in most cases; Click the Next button when you are done:



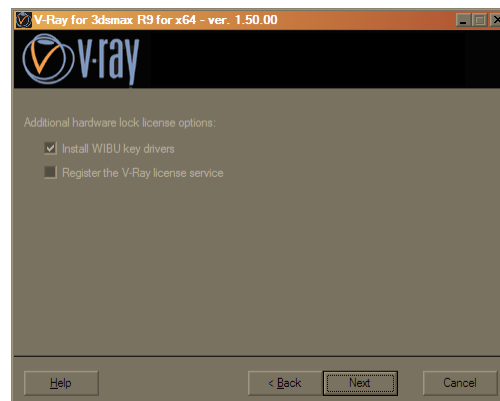
7. The screen allows you to choose whether you will be running the V-Ray license server on the same machine, or on a different machine in the network.



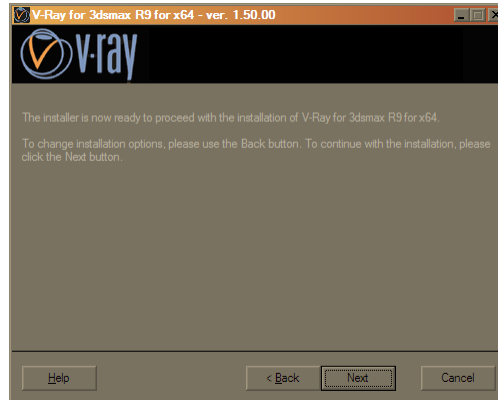
8. If you opted to install the V-Ray license server locally on the same machine, the next screen presents additional options specific to the hardware license; otherwise, you will get directly to step 9 and after the installation is complete, you will get a dialog for setting up the remote license server settings.

8.1 The first option is to install the hardware lock drivers. If you intend to use the dongle on this workstation, then this option must be ON in order for the dongle to work properly.

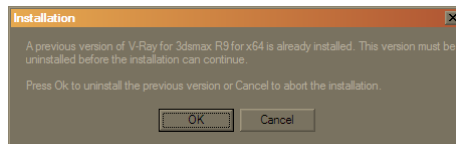
8.2 The second option allows you to register the V-Ray license service so that it will start automatically when Windows boots up. The V-Ray license service must be running whenever you want to use the dongle on a given workstation (it reads the information from the dongle and communicates with V-Ray rendering system to process this information). If you intend to use the dongle on this machine, then it is recommended to turn this option ON.



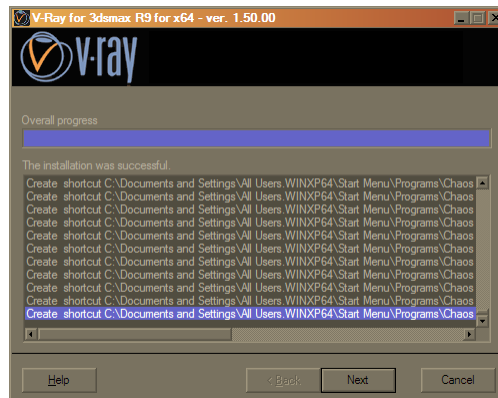
9. The next screen is your last chance to cancel the installation or to modify any installation options before any changes have been made to your system. If you wish to change any of the settings you have selected, click the Back button. To continue with the actual installation, click Next. Click Cancel to exit the installer without any changes to your system.



10. If there was a different version of V-Ray installed, you will receive a dialog box prompting to uninstall the current version; If you wish to keep the current version (for example, if you just wish to install into a different folder), click OK in this dialog box, and Cancel the uninstaller dialog that follows. Otherwise, click OK and proceed with the uninstaller.

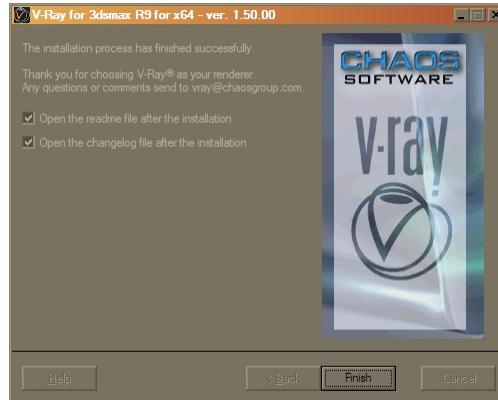


11. The installer proceeds to copy the V-Ray files to your system and prints out the progress of the installation. If you wish, you may examine the installation log to see what actions have been carried out. Click Next to go to the final screen of the installer.



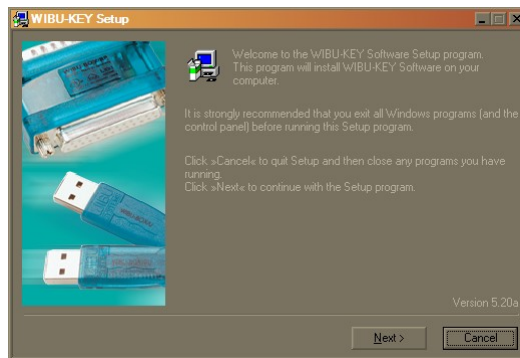
12. If you wish to view the changelog and readme files for this version V-Ray, leave the check-boxes selected. If you do not wish to view the files, clear the checkbox(es). Click Finish to exit the installer.

V-Ray 1.5 for 3ds Max Installation Guide

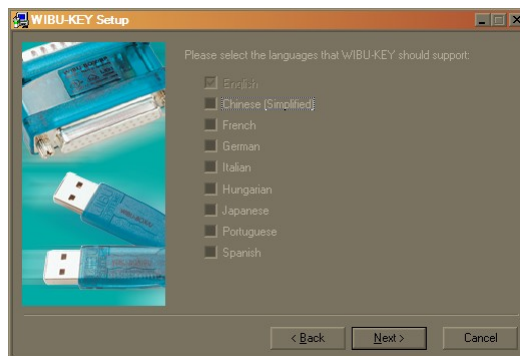


13. If you chose the option to install the dongle drivers, you will get the initial screen of the dongle drivers installer; Click the Next button to proceed with the installation of the dongle drivers.

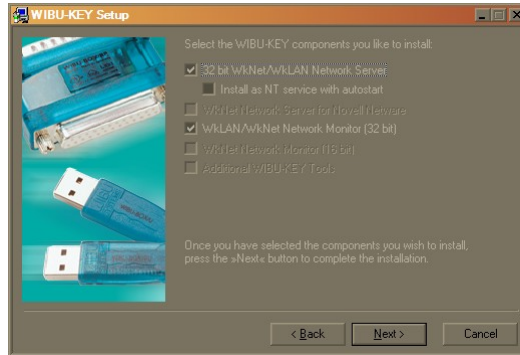
Note: The 32-bit installation of V-Ray includes only the 32-bit WIBU-KEY drivers. If you are installing the 32-bit version of V-Ray on a 64-bit operating system, you must download and install the dongle drivers separately from the WIBU-KEY website at http://wibu.com/download_user.php



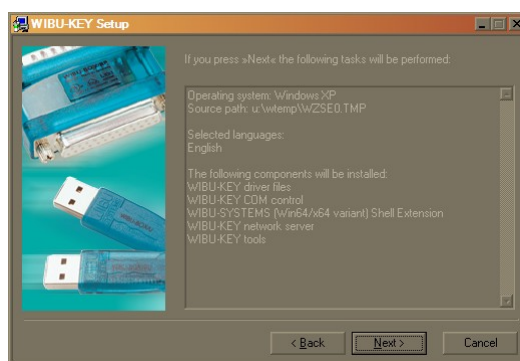
14. The next screen allows you to choose language support for the dongle drivers; click Next to go to the next screen:



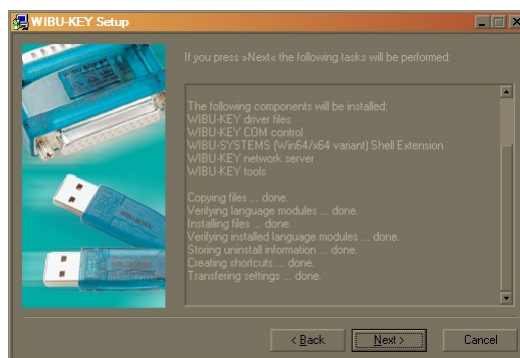
15. The next screen allows you to choose some components for the drivers; leave the settings at their default and click the Next button.



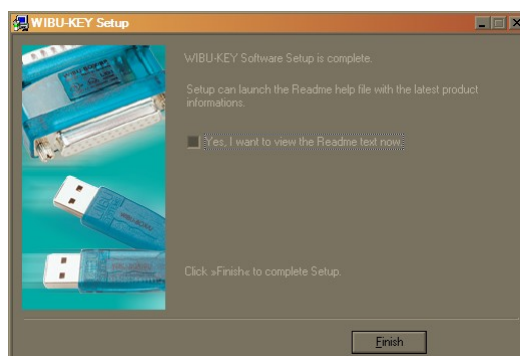
16. The next screen shows the options with which the dongle drivers will be installed. If you wish to make any changes, click the Back button; if you wish to cancel the dongle drivers installation, click the Cancel button. To proceed, click Next.



17. The WIBU key installer proceeds to copy the necessary files to your system. After the files are copied, click the Next button to go to the final screen of the dongle drivers installer.

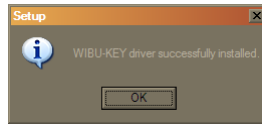


18. You should get the final screen of the dongle drivers installer. Click Finish to exit.



19. If the installation is successful, you will get a confirmation message box; Click OK to

close it.

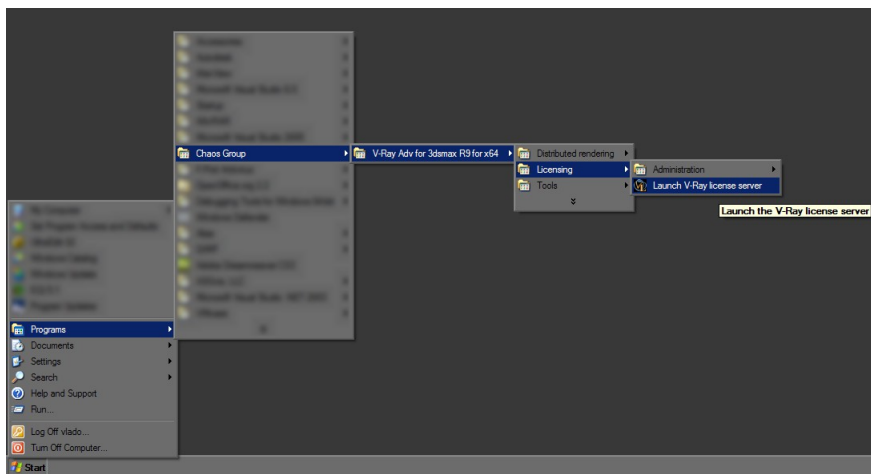


20. Now that the dongle drivers are installed, plug the V-Ray dongle into a free USB port on your machine:

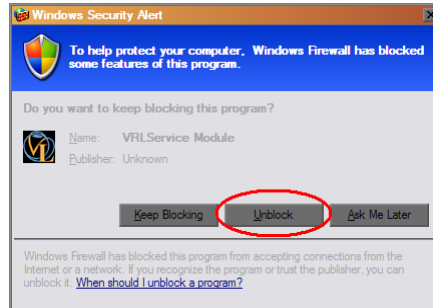


Note: if you have more than V-Ray dongle, you can plug them all into the same machine. The number of available licenses will be added from all dongles.

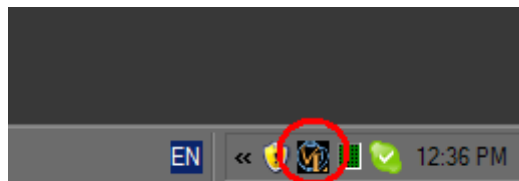
21. Start the V-Ray license service from the **Start menu > Programs > Chaos Group > V-Ray for 3dsmax > Licensing > Launch V-Ray license service**):



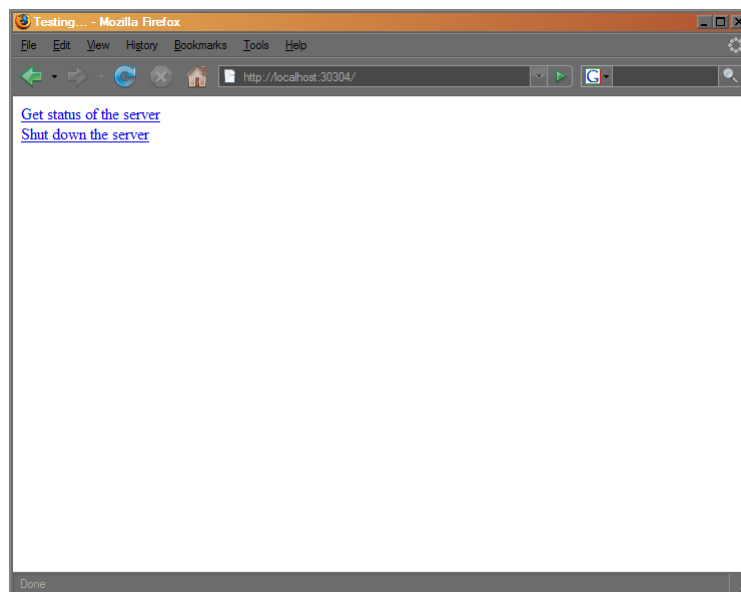
22. If you are running Windows XP with Service Pack 2 and Windows Firewall enabled, you may get a message like the one below; select the Unblock option to allow other computers to connect to the V-Ray license service - this will be required by render slaves for network rendering, which must be able to connect to a running license service.



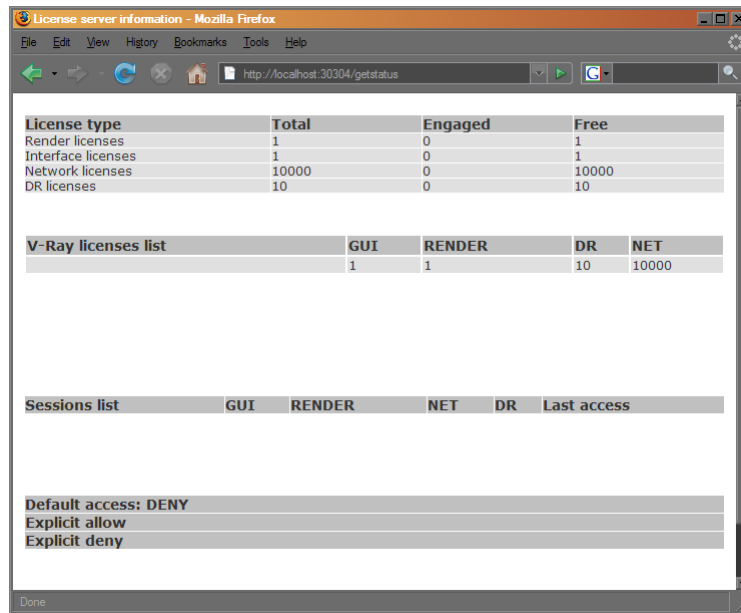
23. If the dongle is correctly recognized, you will get the V-Ray license service icon in the TaskBar:



24. The V-Ray license service allows you to check its status from anywhere in the network using a regular web browser. For example, if you want to check the current status of the license service that you just started, open your web browser, and in the address field type **http://localhost:30304** and press Enter. You should get a page like below; choose the **Get status of the server** option to see more information.



25. The Status page shows information about the total number of licenses available to the license server; how many of them are engaged and by which machine in the network etc.



License type	Total	Engaged	Free
Render licenses	1	0	1
Interface licenses	1	0	1
Network licenses	10000	0	10000
DR licenses	10	0	10

V-Ray licenses list	GUI	RENDER	DR	NET
	1	1	10	10000

Sessions list	GUI	RENDER	NET	DR	Last access
---------------	-----	--------	-----	----	-------------

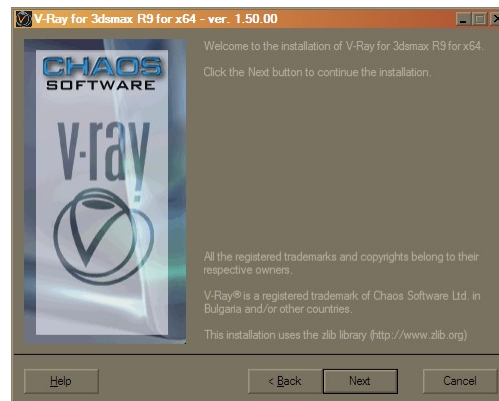
Default access: DENY
Explicit allow
Explicit deny

26. This concludes the installation of V-Ray 1.5 with hardware lock on your workstation. See the section below for setting up your render slaves.

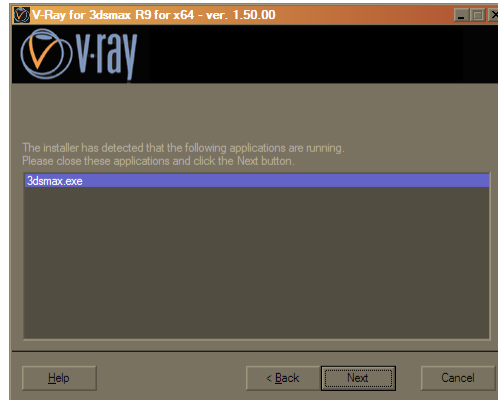
Render slave installation of V-Ray 1.5

To install V-Ray 1.5 on render slaves for network or distributed rendering please follow these steps.

1. Start the installation file by double-clicking on it; note that you must have Administrator privileges to install V-Ray. You should get the initial screen of the installer; click the Next button to proceed.



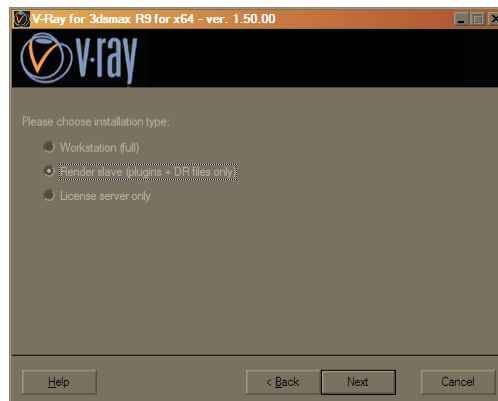
2. If there are any applications running, which would prevent the installation from completing properly, you will get a screen listing these applications; close them and click the Next button to proceed:



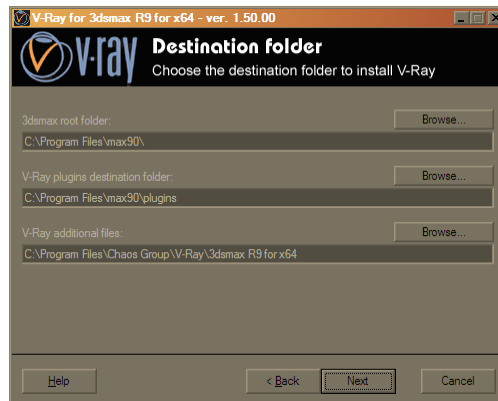
3. The next screen is the V-Ray licensing agreement; click the I agree button to proceed with the installation:



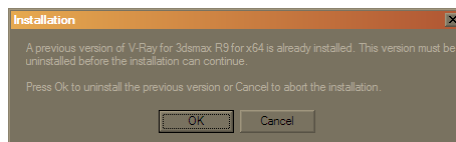
4. The next screen allows you to select the installation type. Choose the "Render slave" option and click the Next button:



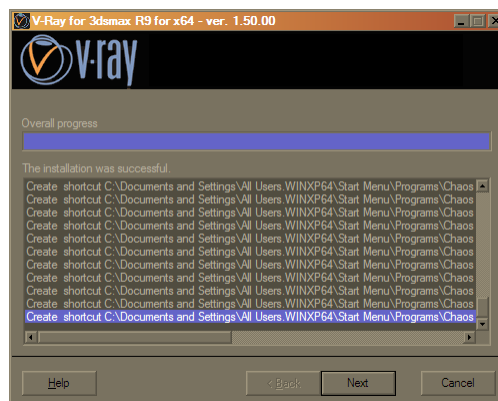
5. The next screen allows you to specify the path to the 3ds Max installation, as well as an installation path for additional V-Ray files. Normally these are filled automatically by the installer, but you can modify them if you wish. Click the Next button to proceed:



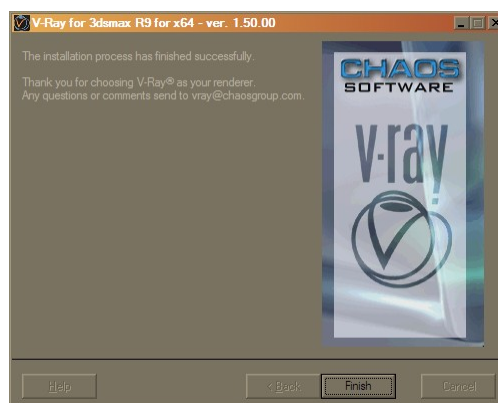
6. The next screen is your last chance to cancel the installation or modify any options. If you are sure that you wish to proceed, click the Next button.
7. If there was a previous version of V-Ray installed, you will get a dialog box that it must be uninstalled first; click the OK button to uninstall the previous version:



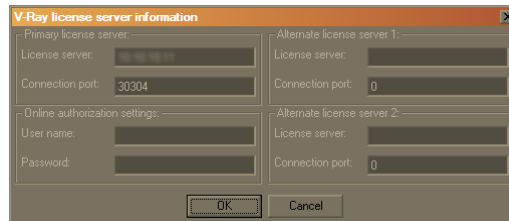
8. After the uninstallation of the previous version (if there was one), the installer proceeds to copy the files required for network and distributed rendering with V-Ray. If you wish, you can examine the changes made to your system in the list box. Click the Next button to get to the final screen of the installer.



9. After the installation is complete, you will get the final screen of the installer; click OK to close it:



- When you close the installer, you will get a dialog for the V-Ray license server settings. Note that for network and distributed rendering, the slaves will require a connection to a working V-Ray license server, even though they do not require a separate license. Enter the name or IP address of the machine where the V-Ray license server is running and click the OK button to close the dialog.



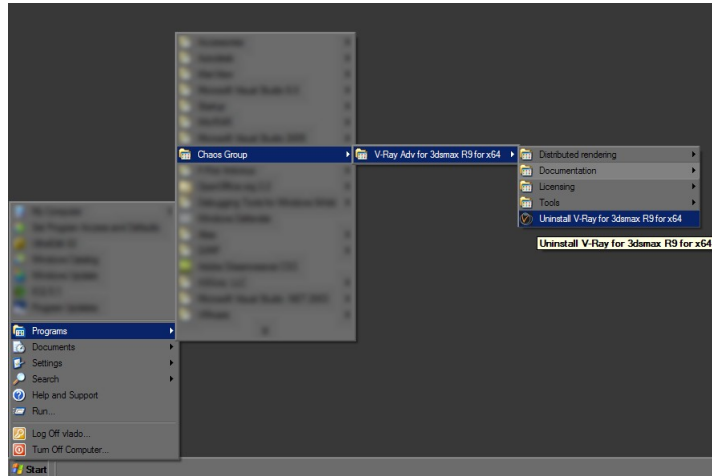
- Note that you can change these settings at any other time by running the V-Ray license client configuration utility from the **Start menu > Programs > Chaos Group > V-Ray for 3dsmax > Licensing > Administration > Change V-Ray client license settings**.
- If you wish to use the slave for Distributed rendering, you can register the V-Ray spawner service so that it runs automatically from the **Start menu > Programs > Chaos Group > V-Ray for 3dsmax > Distributed rendering > Administration > Register V-Ray spawner service**. Also note that, in order for the spawner to work properly, you must run at least one regular network render job with backburner on the render slave.
- If you will be using Autodesk VIZ for distributed rendering, you need to create a file **vrayspawner.ini** in the root folder of Autodesk VIZ on each render server and add the following text in it:

```
[Directories]
AppName=<path to the 3dsviz.exe file>
```

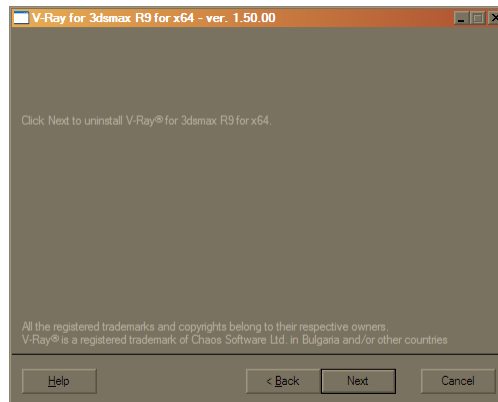
Replace the text in brackets <> with the full path to the file 3dsviz.exe, for example
C:\Program files\Autodesk\Viz2006\3dsviz.exe

Uninstalling V-Ray 1.5

You can uninstall V-Ray either from the Control Panel (**Control Panel > Add/remove programs**), or from the Start menu (**Start menu > Programs > Chaos Group > V-Ray for 3ds Max Rx > Uninstall V-Ray for 3ds Max Rx**):



This will start the V-Ray uninstaller. Follow the on-screen instructions to remove V-Ray from your system and restore any files overwritten by the installation.



Appendices

Reprogramming a V-Ray dongle for a different number of licenses

If you purchase more copies of the V-Ray renderer, your dongle will need to be reprogrammed to reflect the new number of available licenses. Reprogramming the dongle is a two-part process:

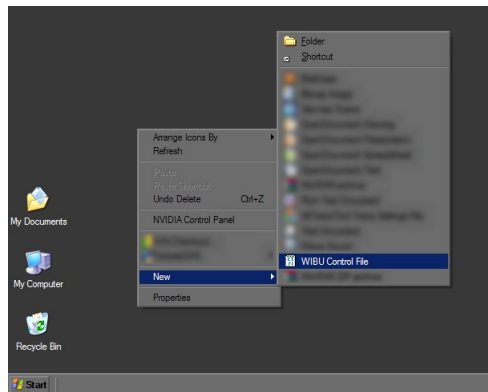
- A. In the first part, you need to send us a special file, created by the WIBU-KEY drivers which contains information identifying your specific dongle.
- B. Chaos Group will send you another file, which includes the new contents of your dongle. This is transferred onto the dongle by the WIBU-KEY drivers.

After the dongle is reprogrammed, you can check if the new licenses have been added successfully. Here are these steps in more details.

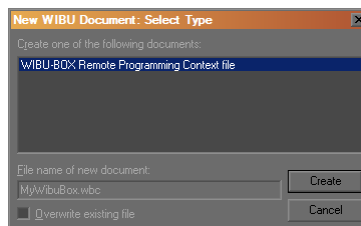
Creating a dongle remote programming context file (.wbc)

In order to reprogram the dongle, you first need to create a file which identifies your specific dongle.

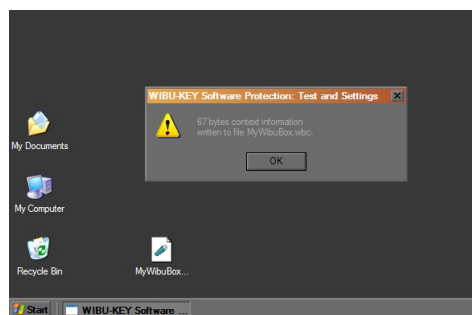
1. Go to the machine where the dongle is plugged and where the WIBU-KEY drivers are installed.
2. Right-click on the Desktop and select **New > WIBU Control File**.



3. This will open a dialog box similar to the one below. Make sure you have selected the option **WIBU-BOX Remote Programming Context file** and click the Create button:



4. If the dongle information is successfully written, you will get a message similar to the one below and a new file **MyWibuBox.wbc** will be created on the Desktop.
Note: the .wbc file does not contain any information that may personally identify you or your computer. It contains only information about your dongle.



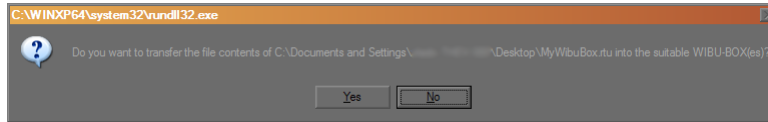
5. Email this file to vray@chaosgroup.com along with any other relevant information.

Updating the contents of the dongle with a remote programming file (.rtu)

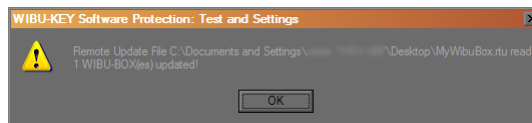
Once we receive the .wbc file, we will generate another file with extension .rtu that can be used by the dongle drivers to update the contents of the dongle.

1. When you receive the .rtu file, save it on the Desktop of the machine where the dongle is plugged.

2. Close the V-Ray licensing service, if it is running. You can do this either by right-clicking the V-Ray license service icon in the Task Bar and selecting **Exit**, or if it is running as a service - from the **Control panel > Administrative tools > Services** applet.
3. Double-click the saved *.rtu* file. The dongle software will ask you whether you really want to transfer the file to the dongle. Click Yes to update your dongle.



4. If the contents of the file is successfully transferred, you will get a confirmation dialog similar to the one below; click OK to close the dialog.

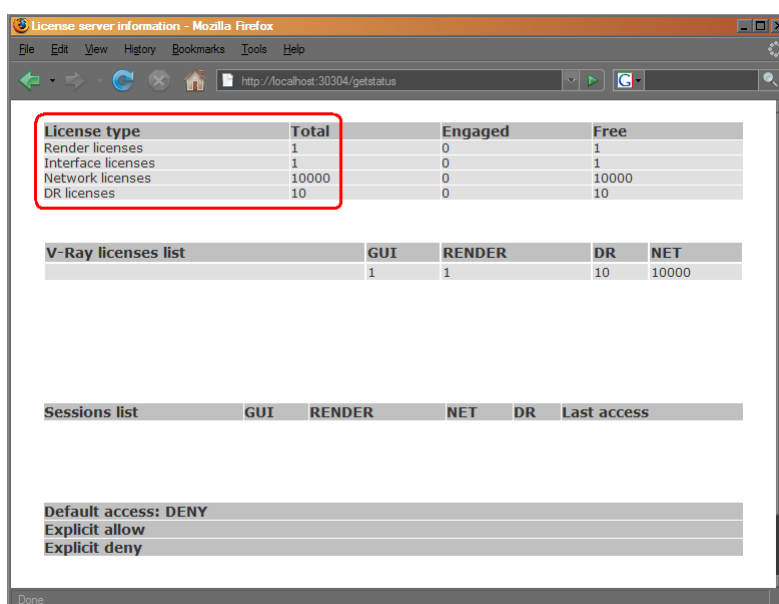


5. Start the V-Ray licensing service again, for example from the **Start menu > Programs > Chaos Group > V-Ray for 3dsmax > Licensing > Launch V-Ray license server**.

Checking if the dongle has been reprogrammed correctly

After the dongle is successfully updated, you may wish to check if the number of licenses is correct.

1. Make sure the V-Ray licensing service is running on the machine where the dongle is plugged in.
2. Open a web browser and in the address field, type **http://someserver:30304** where *someserver* is the name or IP address of the machine where the V-Ray licensing service is running (or *localhost* if you are on that machine). Click the **Get status of the server** link on the page that loads. This will show a web-page with information about the licenses currently available to the V-Ray licensing service. The total number of licenses is listed at the top of the page:

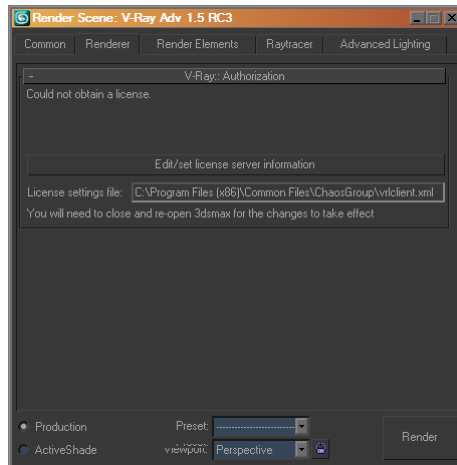


3. Check if the numbers match the required number of licenses.

Troubleshooting

V-Ray renderer user interface is missing in 3ds Max

Symptoms: When you assign V-Ray as the current renderer in 3ds Max, instead of the normal user interface in the Render Scene dialog, you get the following:

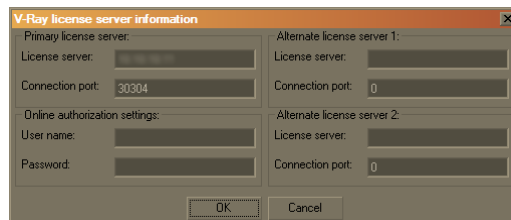


Cause: This happens because V-Ray cannot obtain a user-interface license. There are a number of causes for this:

- A. The license server machine name or IP is not specified correctly;
- B. The license server is not running on the specified machine;
- C. There is a network problem that prevents V-Ray from connecting to the license server;
- D. All the available licenses are already engaged by other machines in the network.

Resolution: The resolution to the issue depends on the specific cause for it. Please check the following:

- A. Check that the license server name or IP address and port number are specified correctly. To do this, click on the **Edit/set license server information** button and in the dialog that appears make sure that the server name/IP are entered correctly and that the port number is correct. Note that you will need to restart 3ds Max if you modify any of these settings.



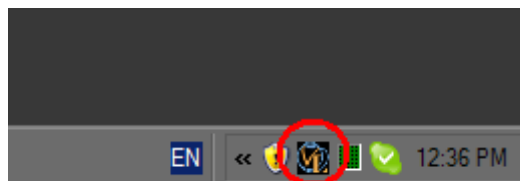
- I. The port must be 30304.
- II. If the license server is running locally on the same machine, the server name must be *localhost* or IP *127.0.0.1*; otherwise, it must be the name or IP of the machine where the license server is running. You can obtain the computer name/IP address of a machine from your system administrator or using one of the methods below:
 - a. To find out what is the name of the machine running the V-Ray license server, go

to that machine, open the **Control panel > System** applet and choose the **Computer Name** tab. You will find the computer name listed there.

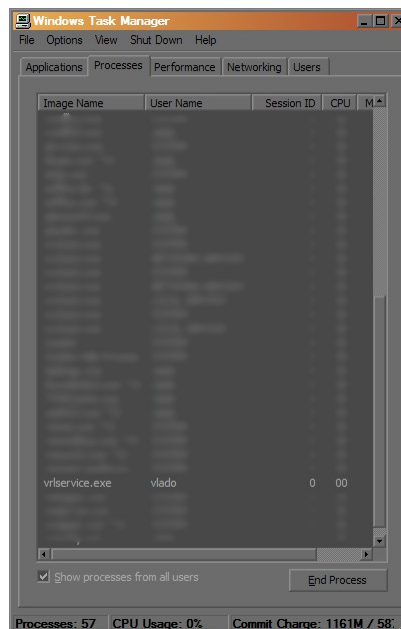
- b. To find out what is the IP address of the machine running the V-Ray license server, use the **ipconfig** command line utility, or go to the **Control panel > Network connections > Local area network** applet and choose the **Support** tab. You will find the current IP address of the machine there.

B. If the license server name and port are specified correctly, make sure that the license server is actually running on the specified machine. This can be done in one of the following ways:

- I. Check to see if the license server icon is present in the TaskBar (it is the blue-orange V-Ray logo with the letter L). If this icon is present, then the V-Ray license service is running on the machine.



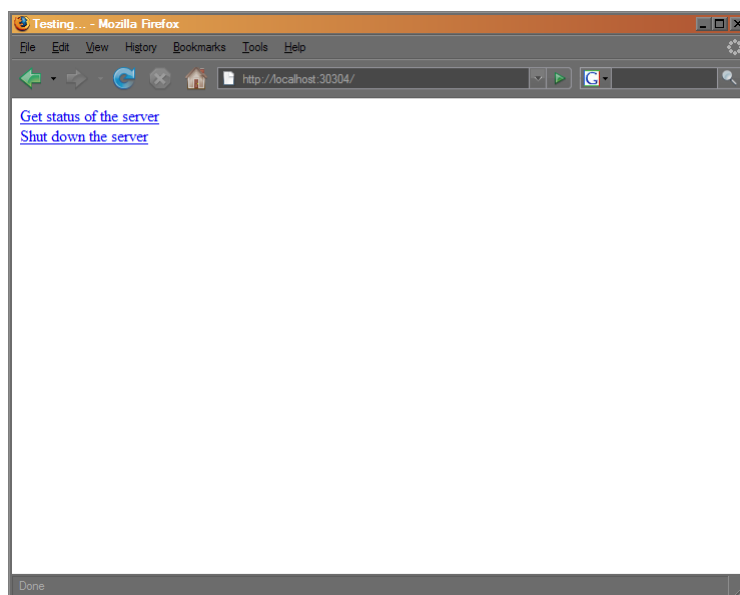
- II. If the V-Ray license service icon does not appear in the Task Bar, the license server may still be running hidden as a service. To check if it is running, open the Task Manager (e.g. **Start menu > Run...** and type *taskmgr* and press Enter). In the Task manager window, select the Processes tab. Make sure that the **Show processes from all users** option is checked and try to locate a process named **vrlservice.exe** – if this process is present, then the V-Ray license server is running on the machine.



- III. If you cannot locate the **vrlservice.exe** process in the Task Manager, this means that the V-Ray license server is not running and you will need to start it manually. To start the license service, you can use the **Start menu > Programs > Chaos Group >**

V-Ray for 3ds Max > Licensing > Launch V-Ray license service. If you get any errors from the license service, please see the other sections of the Troubleshooting guide.

- C. If the license service is running, there may be a network problem that prevents V-Ray from communicating with it.
 - I. You can check if you can connect to the license service with a regular web browser. On the machine where you want to run V-Ray, open a web browser and in the Address field type **http://servername:30304** where *servername* is the name or IP address of the machine where the license service is running (*localhost* if it is running on the same machine). If you get a page like the one below, then the licensing service can be accessed successfully through the network.

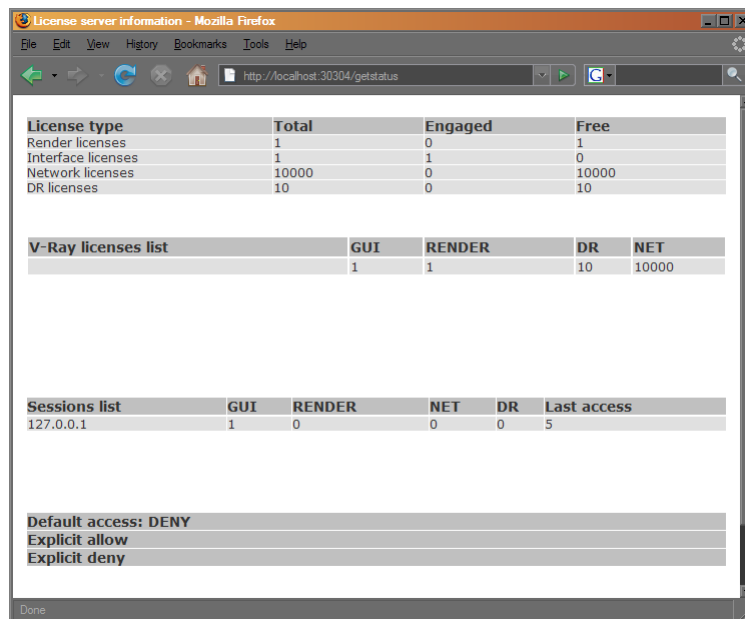


If you get an error message in your web browser, then there is a network problem to connect to the license service. See below for more details.

- II. If there is a network problem while you try to connect to the license server, there may be two different reasons for it:
 - a. If you can access the Internet or other machines in your network successfully, then the most likely problem is that a firewall or an anti-virus program is blocking the communication between the two machines. Please contact your system administrator for help on setting up your firewall and/or antivirus programs. The communication ports used by V-Ray by default is *30304*.
 - b. If you cannot connect to the Internet or other machines in the network, then there may be a physical problem in the communication between the machines (e.g. defective network cable etc) or a problem with your network settings. Please contact your system administrator for more help on this issue.
- D. If you can successfully connect to the license service, the problem may be that all the available licenses are engaged by other machines in your network.
 - I. If you are using a hardware lock (dongle), the number of available licenses is listed

in the license server status page. To see this page, open a web browser and in the address field type **http://servername:30304** where *servername* is the name of the machine where the license service is running (*localhost* if this is the same machine where you are typing this).

- II. Click on the link **Get status of the server**. This will open a page with information about the available licenses. For example, in the image below, you can see that the available licenses are 1 interface license (the Render Scene dialog), 1 render license, 10 DR licenses and 10000 network licenses (for backburner rendering). Also, the interface license is engaged by the machine with IP address *127.0.0.1* (which is the same machine where the license server is running).



License type	Total	Engaged	Free
Render licenses	1	0	1
Interface licenses	1	1	0
Network licenses	10000	0	10000
DR licenses	10	0	10

V-Ray licenses list	GUI	RENDER	DR	NET
	1	1	10	10000

Sessions list	GUI	RENDER	NET	DR	Last access
127.0.0.1	1	0	0	0	5

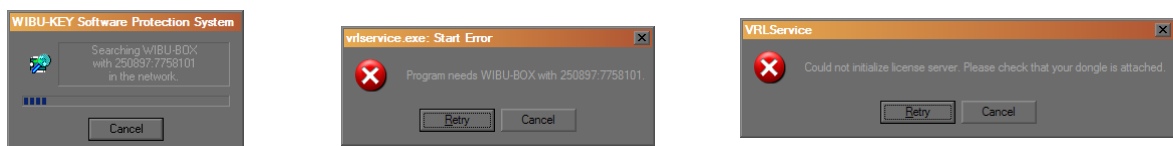
Default access: DENY
Explicit allow
Explicit deny

- III. If there are no free interface licenses, then they have all been engaged by other machines on the network, which are also listed in the page. Close the **Render Scene** dialog on one of those machines to free an interface license that you can use.

If you still have not solved your problem, please contact us by email at vray@chaosgroup.com or by phone at the numbers listed on the Chaos Group web page <http://www.chaosgroup.com/about/>

The license service does not start because no dongle is found

Symptoms: When you start the V-Ray license service it pops a dialog box like the ones below:



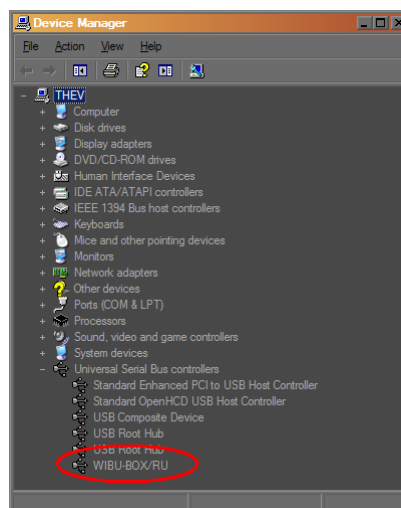
Cause: This happens because the license service cannot find a dongle attached to the machine. This can happen for a number of reasons:

- A. The dongle is not attached to the machine;

- B. The WIBU key drivers are not installed;
- C. The dongle is not recognised.

Resolution:

- A. Make sure the dongle is attached to a USB port on the machine where you start the V-Ray license service.
- B. If the dongle is attached, make sure that you have also installed the WIBU key drivers. To check if the WIBU key drivers are installed, open the **Control panel > Add/remove programs** applet and look for a WIBU-KEY setup entry. If you do not find this entry, then the dongle drivers are not installed. To install the drivers, either run the V-Ray installation again and make sure the “Install WIBU-KEY drivers” option is checked, or download the drivers separately from the WIBU-KEY website at http://wibu.com/download_user.php
- C. If the dongle drivers are installed, make sure that they recognize the plugged dongle.
 - I. Open the **Control panel > System** applet. Choose the **Hardware** tab and then click on the **Device manager** button. Expand the **Universal serial bus controllers** section and check for a WIBU key entry there:



- II. If you do not find this entry, try plugging the dongle into a different USB port.
- III. If you still cannot make your system to recognize the dongle, please contact us at vray@chaosgroup.com or at one of the phone numbers listed on our web site at <http://www.chaosgroup.com/about/>
- D. If the dongle drivers recognize the dongle, but the V-Ray license service still refuses to run, it may be that your dongle does not contain a V-Ray license or contains a license for a different V-Ray version. For further assistance, please contact us at vray@chaosgroup.com or at one of the phone numbers listed on our web site at <http://www.chaosgroup.com/about/>

After working properly for a while, the dongle is no longer detected

Symptoms: The dongle has been working fine for some time and suddenly it is no longer recognized by Windows as a USB device causing the V-Ray license server to fail or V-Ray

licenses to be refused.

Cause: We are unsure of the cause of this except that it is not directly related to V-Ray itself.

Resolution: Plug the dongle into a different USB port on the same machine and restart the V-Ray license server. If the dongle is still not recognised, try to install it on a different machine. If it is still not recognized, please contact us at vray@chaosgroup.com or at one of the phone numbers listed on our web site at <http://www.chaosgroup.com/about/>

The license service is running properly, but there is no icon in the TaskBar

Symptoms: The V-Ray licensing service is running and is listed in the active processes by the Task Manager, but there is no icon in the TaskBar.

Cause: There may be two reasons for this:

- A. The icon is hidden by the **Auto-hide unused icons** option of the TaskBar tray.
- B. If the V-Ray license service was started automatically as a Windows service, it will not show any UI items.

Resolution:

- A. If you have the **Auto-hide unused icons** option of the TaskBar tray, click on the double-arrow icon to expand the full list of icons.
- B. If you still do not see the V-Ray licensing service icon, that means that the V-Ray licensing service is started as a Windows service and in that case cannot show any graphical user interface. There is currently no resolution for this; you must manage the V-Ray license service from the **Control panel > Administrative tools > Services** applet.